

White stays white –  
even with tannins

# RUBBOL® WP 1900

**sikkens**  
WOOD COATINGS

Primer and mid coat  
for exterior wooden  
elements like windows  
and doors

*Passion for wood*



# RUBBOL® WP 1900: Maximum quality of wood choices, minimum discolouration risk

Beautiful wooden windows deserve the best protection available from discolouring extracts. RUBBOL® WP 1900 provides complete peace of mind, regardless the quality of the wood you choose. Easy to apply by dipping or flow coating, the advanced primer and mid coat solution delivers a level of protection against tannin bleeding never seen before in a water-borne primers. The result: high-quality wooden windows that offer a healthy living environment and retain their attractive appearance.



## **Start with protection**

Specially engineered for perfect wood moisture regulation and isolating properties, RUBBOL® WP 1900 is the ideal primer and mid coat for both pine and hardwood window frames. The neutral white coating gives you maximum freedom to apply an attractive top coat.

## **Low emissions**

With a maximum VOC rating of 40g per liter, RUBBOL® WP 1900 is suitable for windows, joinery and cladding with low-emissions claims. At the same time, it enables you to promise outstanding protection from both weathering and tannin bleeding.

## **Processing efficiency**

Thanks to excellent filling, pore wetting and run-off properties, RUBBOL® WP 1900 offers smooth, trouble-free processing. Ideal for both dipping and flow coating, it shows outstanding body and film forming qualities and fits seamlessly into various types of manufacturing – including yours.

# Proven durability

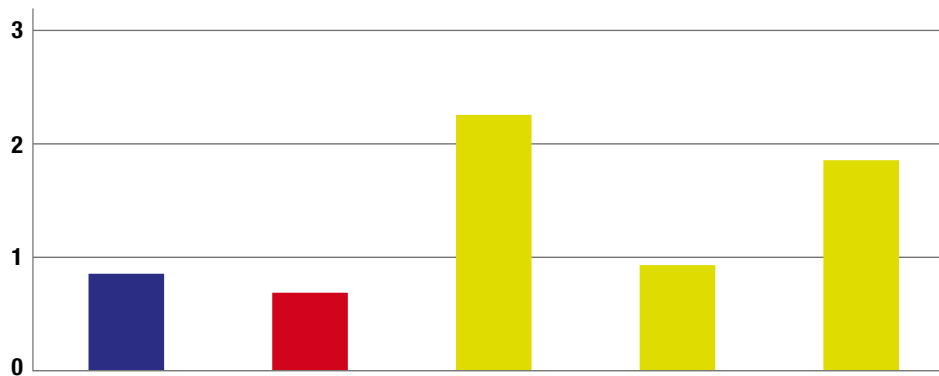
Long standing tests have proven its resistance to weather conditions as extreme as arctic snow and ice, the glaring desert sun and tropical jungle humidity.



## System structure: Dimensionally stable wooden components

Product type	Product name	Product advantages	Application
<b>Impregnation</b>	CETOL® WV 880 BPD	Translucent single pack impregnation, deep penetration, transparent impregnation, protection against blue stain and rot fungi.	Dipping, flow coating, brushing machine
<b>Primer</b>	RUBBOL® WP 1900-02	Opaque single pack primer and mid coat, good run-off properties, wood moisture regulating, good pore wetting, high filling properties.	Dipping, flow coating
<b>Mid coat</b>	RUBBOL® WP 1900-02	Opaque single pack primer and mid coat, good run-off properties, wood moisture regulating, good pore wetting, high filling properties.	Dipping, flow coating
	RUBBOL® WF 3300-03-20	Opaque semi matt single pack mid and top coat, good flow, good weather resistance, very good scratch resistance, good hiding power.	Spray application Airmix/Airless
	RUBBOL® WF 3310-03-25 or 35	Opaque semi matt or semi gloss single pack mid and top coat, good levelling, good weather resistance.	Spray application Airmix/Airless
<b>Top Coat</b>	RUBBOL® WF 3300-03-20	Opaque semi matt single pack mid and top coat, good flow, good weather resistance, very good scratch resistance, good hiding power.	Spray application Airmix/Airless
	RUBBOL® WF 3310-03-25 or 35	Opaque semi matt or semi gloss single pack mid and top coat, good levelling, good weather resistance.	Spray application Airmix/Airless

# Product benefits by comparison

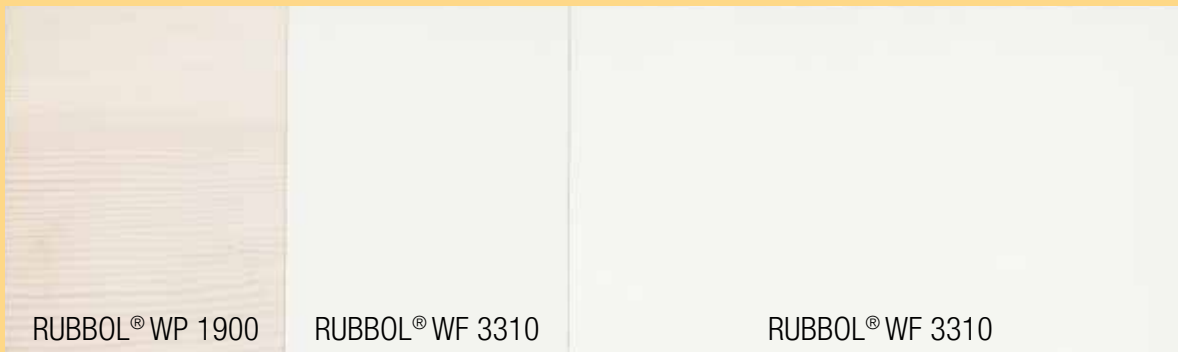


Tannin bleeding in tropical chamber.  
Average results for six wood types.

RUBBOL® WP 1900 —  
 RUBBOL® WP 165 —  
 Competitors —

ΔE 0 – perfect  
 ΔE 3 – bad

ΔE (measurable number that shows the variation of the colour before and after the test)



Test of tannin bleeding with RUBBOL® WP 1900 on pine.



Test of tannin bleeding with competitor product on pine.



All our new and innovative products are tinted with the new Aquaflex colourants only!

WOOD COATINGS  
 COLOR SYSTEM



AkzoNobel

# Low emissions, high protection against discolouration



## RUBBOL® WP 1900-02\*

Water-borne, white primer and mid coat for components made of pine and hardwood with isolating properties against discolouring extracts, exterior and interior.



**Delivery method:** Water-borne

**Type of binder:** Acrylic alkyd resin combination



**Application:** Dipping, flow coating

**Area of use:** Stable and semi stable wooden constructions

\* **New product numbering:** With our new numbering, which we are now successively introducing, you will receive more information at a glance, e.g. with RUBBOL® WP 1900-02: the 02 figure stands for application method (dipping/flow coating).

### Colour shade

White

### Packsize

20 l / 120 l

**sikkens**  
WOOD COATINGS

*Passion for wood*

## AkzoNobel

[www.akzonobel.com](http://www.akzonobel.com)

AkzoNobel has a passion for paint. We're experts in the proud craft of making paints and coatings, setting the standard in color and protection since 1792. Our world class portfolio of brands – including Dulux, International, Sikkens and Interpon – is trusted by customers around the globe. Headquartered in the Netherlands, we are active in over 150 countries and employ around 34,500 talented people who are passionate about delivering the high-performance products and services our customers expect.

For more information please visit  
[www.akzonobel.com](http://www.akzonobel.com)

Akzo Nobel Hilden GmbH  
Düsseldorfer Straße 96–100  
40721 Hilden  
Germany  
[www.sikkens-wood-coatings.com](http://www.sikkens-wood-coatings.com)

© 2019 Akzo Nobel N.V.  
All rights reserved.